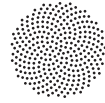
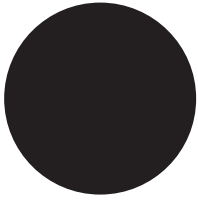


Finish Chart • Charte des finis



ARANCIA.

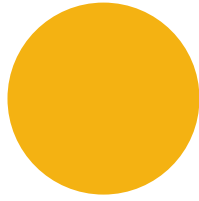
Standard Powder Coat • Fini poudre standard



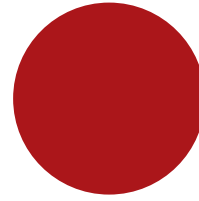
BLACK POWDER COATED
FINI POUDRE NOIRE



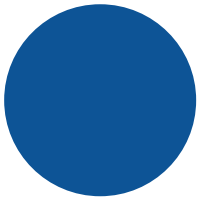
WHITE POWDER COATED
FINI POUDRE BLANCHE
• RAL 9003



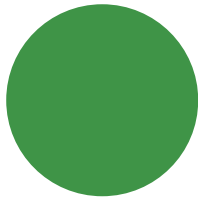
YELLOW POWDER COATED
FINI POUDRE JAUNE
• RAL 1003



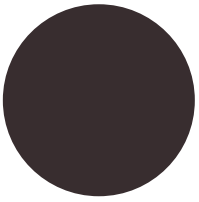
RED POWDER COATED
FINI POUDRE ROUGE
• RAL 3002



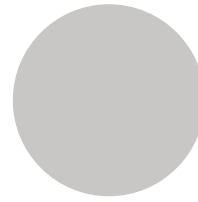
BLUE POWDER COATED
FINI POUDRE BLEU
• RAL 5005



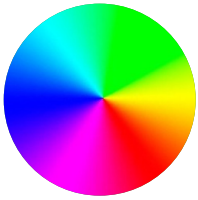
GREEN POWDER COATED
FINI POUDRE VERT
• RAL 6017



DARK BRONZE EFFECT
EFFET BRONZE FONCÉ
• 061/68001



ANODIZED SILVER EFFECT
EFFET ARGENT ANODISÉ
• 38/91020



CUSTOM RAL
RAL SUR MESURE

Anodized Finish* • Fini anodisé*

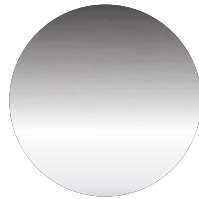


BLACK ANODIZED
ANODISÉ NOIR



CLEAR ANODIZED
ANODISÉ CLAIR

Plating* • Placage*



CHROME PLATED
PLAQUÉ CHROME

* FINISH AVAILABLE ON SELECTED PRODUCTS. REFER TO SPEC SHEET FOR AVAILABILITY.

* FINI DISPONIBLE POUR LES PRODUITS SÉLECTIONNÉS. SE RÉFÉRER À LA FICHE TECHNIQUE POUR DISPONIBILITÉ.